



Frequently Asked Questions DRY Tortugas

Contact us

By phone?

Our booking office telephone number is (281) 970-0534 and can reach us by satellite service. The boat also has VHF and SSB radios on board.

On the web?

www.spreeexpeditions.com

By e-mail?

info@spreeexpeditions.com

Don't forget your log book and C-card!

Tortugas Ecological Reserve

Florida Keys National Marine Sanctuary web site
<http://floridakeys.noaa.gov/tortugas/welcome.html>

How far is it?

70 miles west of Key West, Florida—the southernmost city in the continental USA.

How deep is the reef?

Buoyed dive sites in the Tortugas Ecological Reserve range between 50 and 80 feet deep. Surrounding the reefs, water depths reach 140 feet.

What does it look like?

The Dry Tortugas are part of the third largest barrier reef in the world. The reefs are made up of hard and soft corals, vibrant sponges and marine plants.

What will I see?

Over 250 species of fish are found in the Dry Tortugas, and literally thousands of invertebrates and marine plants call the Dry Tortugas home. Sharks, rays and eels are frequently sighted, and the curious and charismatic Goliath Grouper is making a comeback in a big way. The reef's namesakes are usually around: hawksbill, loggerhead and green sea turtles. Sea birds often visit the boat, and dolphins are also occasionally seen.

Boat

How big?

100ft aluminum crew boat refit for open-ocean diving. The boat has tank racks for each diver, a large camera table and camera rinse barrels, gear rinse tanks, 2 boarding ladders with a large swim platform, and a large sundeck.

How fast?

The Spree is powered by three 12V71 Detroit Diesel engines and runs at a top speed of approximately 16 knots. She has two 30kw generators to keep the lights on and the air compressors pumping.

How many divers?

The Spree carries 22 passengers, 2 trip leaders, and up to 8 boat crew, for a maximum of 32 people aboard.

Can non-divers go?

Non-divers are welcome to come along at full price. Snorkeling is allowed.

Who are the crew?

The boat's crew consists of 2 US Coast Guard licensed captains, 2 galley hands and 3 divemasters.

How are the bunks?

The passenger bunks are arranged in 4 cabins of 4 and a large common area of 8, each bunk with it's own privacy curtain. The Spree's cabins have curtains across the entry. We provide sheets, blankets and pillows. DON'T FORGET YOUR TOWEL!

Is there a TV?

We have a widescreen television with VCR/DVD, satellite receiver and stereo. A large selection of movies is available, but you are more than welcome to bring your own. The crew would love to see something new! We also have cables for some video systems so you can play the tape from your last dive for all to see.

Boarding

Take your seasickness precautions early!

When should we get there?

Boarding begins at 8:00 pm. Please plan to arrive by 7:45 pm to attend the pre-boarding briefing dockside. There are no facilities for passengers to wait at the boat prior to boarding, so if you arrive in town early please plan to spend your day seeing the sights and sounds of Key West.

On boarding evening, you're welcome to join the crew at one of our local eateries. This is a no-host meal, but if you'd like to join us just stop by the boat and we'll let you know where we're headed. Boarding starts after we return from dinner.

At the end of the trip, we usually return to the dock between 1:00 and 2:00 in the afternoon, with dinner off the boat. Guests are welcome to stay aboard until 9:00 am the following morning.

Are bunks assigned?

No. Bunks may be selected and reserved by completing a bunk request as part of your on-line booking form. Otherwise, bunks are on a first-come, first-served basis at boarding time.

Where do we park?

Limited parking is available near the boat dock.

Diving

Certification and age?

Divers must hold a minimum certification of open water or junior open water and be at least 12 years old. All divers between the ages of 12 and 15 MUST dive with either a parent or a dive supervisor. Non-diving minor children will not be allowed unless there is a parent aboard to supervise them at all times, including during dive windows. The crew is not available for babysitting.

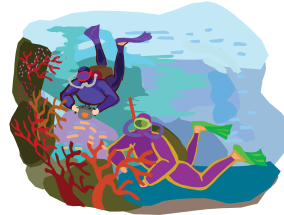


Unaccompanied minors?

Minor children coming without a parent or legal guardian upon boarding must provide the crew with an originally signed and notarized Spree Expeditions release and authorization for medical treatment with photocopies of the parent's medical insurance. These forms are available on our website. Please note, each individual sheet of paper must be signed and notarized. Minors without completed release forms and medical treatment consent forms will not be taken offshore.

What is DAN Insurance?

We highly recommend purchasing diving accident insurance. Divers Alert Network offers very reasonably priced plans for DAN members. Many training organizations also offer accident insurance. If you believe you are covered by your primary medical insurance carrier, please read the fine print. Many consider diving to be an "extreme sport" and do not cover treatment for diving injuries or fees incurred during evacuations.



How are the dives conducted?

The boat divemasters give a thorough briefing the night you board the boat, covering the in's and out's of diving off the Spree. Site-specific briefings are conducted at each new dive site.

The dive times are set by the boat crew, and will be adjusted based on the dive sites visited. Two boat divemasters will be on deck during all dives to assist with entries and exits, as well as any surface assistance that is needed in-water. Dives are not guided, so you can explore the reef at your own pace.

How many dives?

5 dives per day are planned, including night dives, with an abbreviated schedule on the last dive day.

Dive profiles?

The boat-imposed depth limit is 130 fsw. Dives must be planned within recreational limits—no planned decompression dives are allowed on recreational charters. Within those parameters, buddy teams plan and execute their own dives. Dive times are set by the boat crew. Bottom times are limited only by your no-decompression limits, air consumption and common sense.

Entries and exits?

Entries are giant-stride off the port (sometimes starboard) side of the boat. It's about a 6 foot drop that looks a lot higher for you tall guys, but you'll be wet before you know it. The boat has 2 ladders secured to the swim platform on the stern for your exit. Exits are made using lines from the ladders to remove your fins, then climbing the ladder with the rest of your gear in place. Camera lines are rigged for lowering and retrieving camera equipment.

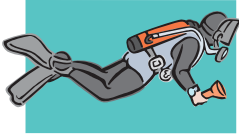
Can I fish?

No fishing is allowed, including spearfishing. The dives are conducted within the Tortugas Ecological Reserve, so no collecting of any kind—live or dead—is allowed.

Can I go snorkeling?

You are welcome to go snorkeling during surface intervals, but please no free-diving. No snorkeling while we're underway, please.

Diving Policies



Depth limits:

Table divers: 130 fsw/39 msw for the first dive of the day only, with a maximum allowable depth of 100 fsw/30 msw for each subsequent dive.

Computer divers: 130 fsw/39 msw per dive.

Rebreather divers: 140 fsw/42 msw per dive.

Anyone violating the depth limits will be required to sit out the next dive. Then the diver's return to diving is at the sole discretion of the Captain.

Dive planning:

All dives will be planned and executed within the no decompression limits of the divers' computers or tables. Decompression diving is not permitted on sport diving charters.

Computer/Dive Table violations:

Any diver found in decompression violation of either their computer or dive tables will need to follow the omitted decompression steps of their computer or tables. This usually involves a 12 or 24 hour extended surface interval. The only exceptions are: (1) in the case of a diver wearing 2 computers, the more conservative one is in DECO, or (2) the obvious failure of a computer, in which case the diver must switch to tables for the following 24 hours. Failure to turn on a computer prior to entering the water or failure to correctly set the breathing gas is not considered failure of the computer. In this case, the diver will be required to switch to dive tables for the following 24 hours. The boat divemasters are required to visually inspect each diver's computer at the time the diver returns to the boat and obtain the diver's profile for the dive.

Out of air:

We feel that running out of air is a life threatening situation and a failure completely within the control of the diver. Barring equipment failure, any diver in an out of air situation in their primary cylinder will be required to sit out the next dive. Then the diver's return to diving is at the sole discretion of the Captain. Out of air is defined as the diver not being able to take an effective breath on their regulator while standing on the dive platform.

Buddy diving:

Every diver must dive with a buddy, maintaining contact throughout the dive. They must enter the water together and return to the boat together with similar dive profiles.

Solo diving:

Solo diving is only allowed by properly equipped and certified solo divers making recreational dives on open circuit scuba. Solo diving certifications accepted aboard the Spree for diving without a buddy are limited to the SDI Solo Diver and PADI Self Reliant Diver programs. No other certification cards will be accepted for solo diving. Properly equipped solo divers will carry a redundant air supply including cylinder, first and second regulator,

surface marker buoy (not lift bag or safety sausage), reel, and audible signaling device. H and Y valves are not considered redundant air sources. Rebreather divers are never allowed to dive solo from the Spree.

Dive Window:

All divers must be in the water within 20 minutes of the opening of the dive window.

Dive Gear

Don't forget your log book and C-card!

What do I need?

All divers should arrive at the boat with a complete set of scuba gear, including but not limited to: mask, snorkel, fins, buoyancy compensator with inflator, regulator with alternate air source and gauges or dive computer, timing device, weight belt, and appropriate thermal protection.

Dive computers are HIGHLY RECOMMENDED.



Rental gear?

There is no rental gear or repair facility on board the boat. Divers need to bring everything with them they need to dive. Also bring your save-a-dive kits!

Tanks?

The boat provides an aluminum 80 for all divers. Air or 32% nitrox is included in the charter price. If bringing a personal tank, it should be brought full and ready to dive.

Pony Bottles?

Pony bottles are considered redundant safety equipment for emergency situations only. Pony bottles equipped as a redundant gas supply with first and second stage regulators will be filled once at the beginning of the charter if needed.

Weights?

Divers need to provide their own weight belt. The boat provides block lead—soft weight is not provided.

Rebreathers?

Rebreather use is allowed on the Spree within certain parameters. Please refer to our rebreather policy.

Scooters/DPV's?

Diver propulsion vehicles are allowed on the Spree on technical diving charters only.

Anything special?

Dive computers are highly recommended. Surface signaling devices (See-me, safety sausage) and whistles or Dive-Alert's are required. It's a big ocean. Bring your lights (primary, back-up and tank marker) for night diving.

Personal Gear



Luggage?

Dive gear is stored on the dive deck below the benches. Clothes and dry things are stored below your bunks in the berthing area, so it's best to pack in two separate bags. Soft-sided luggage and gear bags are preferable to hard cases, as space is limited.

Stuff to buy?

We have t-shirts, hoodies, fleeces, caps and koozies. Major credit cards are accepted for all purchases on board, as well as personal checks and good old cash.

Anything special?

Remember your towels! Bathing suits, shorts and t-shirts are the usual attire. Some people like to have sweats or a light jacket because we keep the boat pretty cool inside. Make sure you bring sunscreen, seasickness preventive, and any over-the-counter or prescription medications you will need during the trip.

Medical conditions?

Any diver with a medical condition which is a contraindication to diving, must, upon boarding, provide the crew with an originally signed and dated letter from their doctor on the doctor's letterhead stating that the doctor understands the consequences of diving with the diver's specific medical condition and that the diver is medically fit to dive. Standard medical release forms alone will not be accepted. Please contact Divers Alert Network about your medical condition.

Food

How's the food?

Plentiful and hot. You won't go hungry.

Drinks?

Lemonade, water, sodas, coffee, tea, and hot chocolate are available all day. Beer and wine are available at the end of your diving day. The bar closes at midnight. Yes, your first beer of the day marks the end of your diving for that day.



Meals?

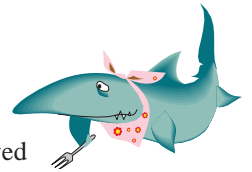
Served buffet-style throughout the day starting with a continental breakfast of rolls, fruit and coffee before the morning dive. After the first dive, a hot breakfast of eggs, bacon or sausage, biscuits and gravy, pancakes or breakfast tacos is served. Lunch is after the second dive and is usually sandwiches, soup, pasta salad or similar fare. Afternoon snack is after the third dive and based upon the creativity of our chef—dinner is after dive four and varies widely from roast to Mexican fare. After your night dive, a snack of warm brownies and vanilla ice cream will be waiting for you.

Special diets?

Our galley hands are more than willing to accommodate restricted diets as long as they know in advance. Vegetarians that eat dairy products are easily accommodated. Low salt or no-sugar are also easily arranged. Vegan and kosher meals, however, cannot be accommodated. PLEASE DO NOT BRING ANYTHING THAT NEEDS TO BE REFRIGERATED. The boat does not have room to store items that must be refrigerated or frozen—the coolers are already filled to the brim.

Can I bring snacks?

Meals and snacks are provided from 6:00 am until midnight. For sanitary reasons, no food or drink is allowed below decks. NO EXCEPTIONS. Please do not bring food or drinks to the boat; if you can't make it without your Milky Way bars, turn them into the galley hands as you board the boat and they will keep them safe for you. Personal ice chests, sodas, beer, and glass containers are not allowed on board at all. Again, **please** do not bring anything that needs to be refrigerated.



Tips

How do the tips work?

Tips are voluntary and performance based. We recommend a 10% gratuity. The Captain will have a basket for tips when tabs are settled at the end of your trip.

Who gets the tips?

The tips are shared equally between the crew.