



Thank you for choosing Spree Expeditions and the M/V Spree for your vacation to the Dry Tortugas.

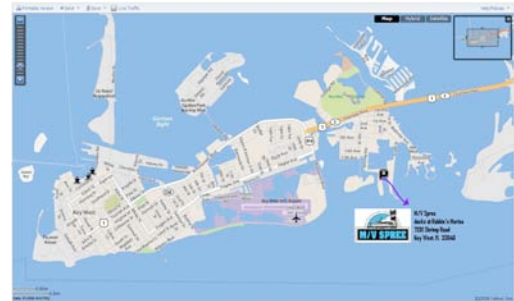
More information about the Spree, your trip and shore-side attractions may be found in our FAQ's <http://www.spreeexpeditions.com/forms.asp>

Interactive maps to the Spree are on our website: www.spreeexpeditions.com/map_dry_tortugas.asp

Some more things to help plan your trip:

All trips depart the night before the scheduled trip date. Please plan your air travel with enough time for minor flight delays.

Luggage drop-off is permitted after noon on departure day. The afternoon is yours to fill seeing the sights of Key West.



Join the crew for dinner at a local restaurant or just meet us back at the boat around 7:30pm. If you plan to join us for dinner, come by the boat in the afternoon and we'll let you know where to meet. Please arrive at the Spree no later than 8:00pm for boarding and briefings.

Passenger boarding begins at 8:00pm, or when we finish dinner and return to the Spree.

Site Name	Lat	Long	Depth (ft)
Dante's Inferno	24 40 007	83 01 311	51
Great Every Time	24 39 045	83 01 816	48
Steve's Reef	24 39 144	83 02 015	57
Bat Caves	24 39 229	83 01 964	56
Good Spot	24 39 253	83 02 075	50
Seachoice Sanctuary	24 39 391	83 02 144	48
George's Gorge	24 39 612	83 00 306	65
Margaret's Reef	24 40 904	83 01 964	53
Gary's Grotto	24 40 691	83 01 070	52
Patti's	24 40 769	83 01 264	57
Awesome	24 40 767	83 01 529	55
Billy's Ridge	24 40 821	83 01 062	53
Bob's Sanctuary	24 41 124	83 00 831	55
Dan's Canyon	24 40 957	83 00 722	63
Anne's Reefs	24 40 891	83 01 745	55
Dragon Fly	24 40 642	83 02 333	63
Brickhead	24 40 743	83 03 310	50
Mushrooms	24 40 782	83 03 470	45
Ingear	24 40 232	83 04 182	45
Gungan	24 39 614	83 04 735	43
Sherwood Forrest	24 41 124	83 00 831	75
8 Fathom Rock	24 41 967	82 59 973	63
Little Bank	24 43 082	82 59 366	72
Alice in Wonderland	24 43 442	82 58 858	73

Tanks and weights are kept aboard the Spree.

There is plenty of time for gear set up after everyone is aboard and the releases are done, as we don't get underway until very late in the evening.

Dives in the North Ecological Reserve of the Dry Tortugas range between 85fsw (the sand) to 45fsw (the reef top). We use installed moorings to secure the Spree, and fully brief each dive site. Our hand-drawn maps are available for review for most sites inside the reserve.

The last charter day we dive our way home, returning to Key West in time for the sunset ceremony. For travel planning, we may be diving until noon or later.

Dinner is on your own in town the last evening, all guests are welcome to stay aboard that night and disembark the following morning by 9:00am.

